



S U P E R S L I M

Assembly Manual & User Guide



PACKAGE CONTENTS

- A. OWC SuperSlim optical drive enclosure
- B. USB 'Y type' cable (Standard-A to mini-B)
- C. Collared Phillips screws (3)
- D. Rubber foot with adhesive backing
- E. Fully threaded Phillips screw

Note: items C-E not shown to scale.

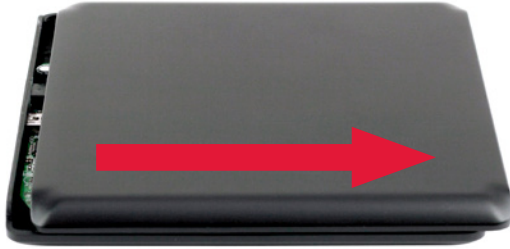


ABOUT THIS MANUAL

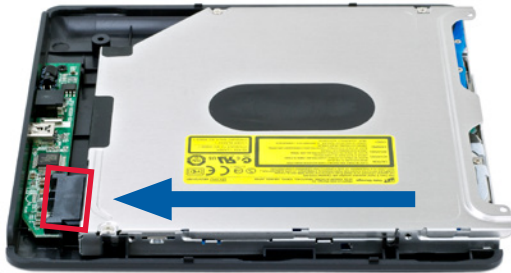
The images and descriptions in this manual may vary slightly from the unit shipped. Functions and features may change depending on the firmware version. Please visit the product web page for the most recent product specifications.

ASSEMBLY STEPS

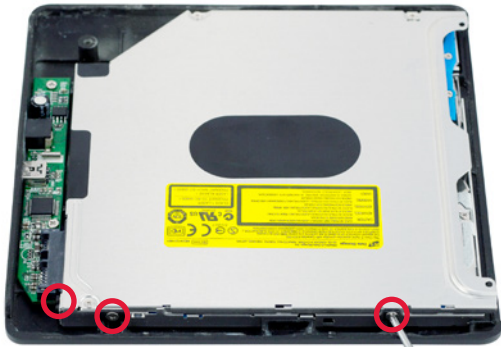
1. Place the OWC SuperSlim on a soft surface with the rear of the unit to your left. Press down lightly on the top case and then push the top case to the right, as shown. This will unseat the top case from the tabs in the bottom case so that you are able to remove the top case.



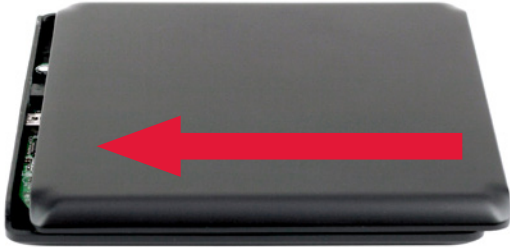
2. Remove the bag of screws and set it aside. Slide your optical drive into the bottom case, as shown (blue arrow). Be sure to insert the SATA connector on the optical drive completely into the black connector on the circuit board in the bottom case (highlighted in red).



3. Using a Phillips screwdriver, affix three of the collared screws into the screw holes along the side and rear portion of the case, as shown at right.



4. Put the top case back on the bottom case and push toward the left, as shown. This will seat the top case into the tabs mentioned in Step 1 and secure the enclosure.



5. Flip the enclosure over and use a Phillips screwdriver to insert the fully threaded screw through the screw hole circled in the picture at right. When the screw is installed, remove the adhesive backing from the rubber foot and place the rubber foot on top of the screw.



The assembly process is now complete. For information on how to connect your OWC SuperSlim enclosure, please see the support tips provided on the next page.

SUPPORT RESOURCES

Connecting the OWC SuperSlim

Use the included USB cable to connect the OWC SuperSlim to your computer. Plug the mini-B connector into the OWC SuperSlim. When connecting the other end of the cable into the computer, use the USB standard-A connector that has two wires going into it. This is the connector that carries a data signal. The other USB standard-A connector is for supplying extra power (see below).

Depending on the power of the USB port on the computer, you may need to connect the second USB standard-A connector from the included 'Y type' cable into another USB port on your computer. Alternatively, you can purchase a separate power supply, available at:

www.owcdigital.com/otg-power

Disc Burning Compatibility

If you are using an Apple® Mac® computer with OS X® 10.4 or later, disc burning will work with iTunes®, iDVD®, and Disk Utility (i.e. additional software is not required). However, OS X versions earlier than 10.4 do require third-party software, such as PatchBurn (www.patchburn.de), to enable burning with the above applications. The OWC SuperSlim is also designed to work with third-party burning software, such as Roxio Toast, NTI DragonBurn, and other popular shareware and freeware burning software.

Using Windows or Linux?

The OWC SuperSlim works with Nero and many other popular burning utilities.

Troubleshooting

Begin your troubleshooting by verifying that the USB "Y" cable is connected to the OWC SuperSlim and to the computer. If you are only using one of the USB standard-A connectors, try plugging in the second connector, as noted above.

If the optical disc is spinning but you cannot see it on your computer, try using another optical disc. You can also try using another brand of optical media. If the burn process is failing, try reducing the burn speed. Check the read and write capabilities of your optical drive and make sure you are only using media compatible with your optical drive mechanism. For example, if you are attempting to use a DVD+R but your optical drive only supports DVD-R media, you will need to switch disc types.

CONTACTING TECHNICAL SUPPORT

8am - 5pm (CT) Monday - Friday

(866) 692-7100 (N. America)

+1 (815) 383-4751 (International)

Live Chat & Email Support

www.owcdigital.com/support

Changes:

The material in this document is for information purposes only and subject to change without notice. While reasonable efforts have been made in the preparation of this document to assure its accuracy, OWC, its parent, partners, affiliates, officers, employees, and agents assume no liability resulting from errors or omissions in this document, or from the use of the information contained herein. OWC reserves the right to make changes or revisions in the product design or the product manual without reservation and without obligation to notify any person of such revisions and changes.

FCC Statement:

Warning! Modifications not authorized by the manufacturer may void the user's authority to operate this device.

NOTE: This equipment has been tested and found to comply with the limits for a Class A digital device, pursuant to Part 15 of the FCC Rules. These limits are designed to provide reasonable protection against harmful interference when the equipment is operated in a commercial environment. This equipment generates, uses, and can radiate radio frequency energy and, if not installed and used in accordance with the instruction manual, may cause harmful interference with radio communications. Operation of this equipment in a residential area is likely to cause harmful interference, in which case the user will be required to correct the interference at his own expense.

NOTE: This equipment has been tested and found to comply with the limits for a Class B digital device, pursuant to Part 15 of the FCC Rules. These limits are designed to provide reasonable protection against harmful interference in a residential installation. This equipment generates, uses and can radiate radio frequency energy and, if not installed and used in accordance with the instructions, may cause harmful interference to radio communications. However, there is no guarantee that interference will not occur in a particular installation. If this equipment does cause harmful interference with radio or television reception, which can be determined by turning the equipment off and on, the user is encouraged to try to correct the interference by one or more of the following measures:

- Reorient or relocate the receiving antenna.
- Increase the separation between the equipment and receiver.
- Connect the equipment to an outlet on a circuit different from that to which the receiver is connected.

Health And Safety Precautions:

- Read this user guide carefully and follow the correct procedures when setting up the device.
- Use proper anti-static precautions while performing the installation of your optical drive into this drive enclosure. Failure to do so can cause damage to your drive mechanisms and/or the drive enclosure.
- Do not attempt to disassemble or modify the device. To avoid any risk of electrical shock, fire, short-circuiting or dangerous emissions, never insert any metallic object into the device. If it appears to be malfunctioning, contact OWC technical support.
- Never expose your device to rain, or use it near water or in damp or wet conditions. Never place objects containing liquids on the drive, as they may spill into its openings. Doing so increases the risk of electrical shock, short-circuiting, fire or personal injury.

General Use Precautions:

- To avoid damage, do not expose the device to temperatures outside the range of 5° C to 40° C (41° F to 104° F).
- Always unplug the device from the electrical outlet if there is a risk of lightning or if it will be unused for an extended period of time. Otherwise, there is an increased risk of electrical shock, short-circuiting or fire.
- Do not use the device near other electrical appliances such as televisions, radios or speakers. Doing so may cause interference which will adversely affect the operation of the other products.
- Do not place the device near sources of magnetic interference, such as computer displays, televisions or speakers. Magnetic interference can affect the operation and stability of optical drives.
- Do not place heavy objects on top of the device.
- Protect your device from excessive exposure to dust during use or storage. Dust can build up inside the device, increasing the risk of damage or malfunction.
- For up-to-date product and warranty information, please visit the product web page.

Copyrights and Trademarks:

No part of this publication may be reproduced, stored in a retrieval system, or transmitted in any form or by any means, electronic, mechanical, photocopying, recording or otherwise, without the prior written consent of OWC.

© 2016 OWC. All rights reserved.

OWC is trademark of New Concepts Development Corporation, registered in the U.S. Patent and Trademark Office and/or in Canada. The OWC logo is a trademark of New Concepts Development Corporation. Apple, iDVD, iTunes, Mac, and OS X are trademarks of Apple Inc., registered in the United States and/or other countries. Windows and Windows Vista are either registered trademarks or trademarks of Microsoft Corporation in the United States and/or other countries. Other marks may be the trademark or registered trademark property of their respective owners.

